

# HOW TO

## Diablo I Hellfire Game

### Set Up the IPX Networking Protocol for Windows XP and 2000

*This guide will show you the steps that are necessary to play Diablo Hellfire on Windows XP or 2000. The instructions provided will work on a normal LAN, a wireless LAN, or a Virtual LAN such as Hamachi.*

Version 1.0

3/28/07

Written by Splat

hellfirehamachi.splatz@xoxy.net

## Prerequisites

This guide assumes that you have met the following criteria:

- Install Diablo 1
- Install Hellfire Expansion Pack
- Install 1.01 Patch for Hellfire
- Apply Multiplayer Hack

## Prerequisites FAQ

*How do I get the Hellfire 1.01 Patch and Multiplayer Hack?*

<http://web.archive.org/web/20010610015844/http://www.diabloii.net/hellfire/mphellfire.shtml>

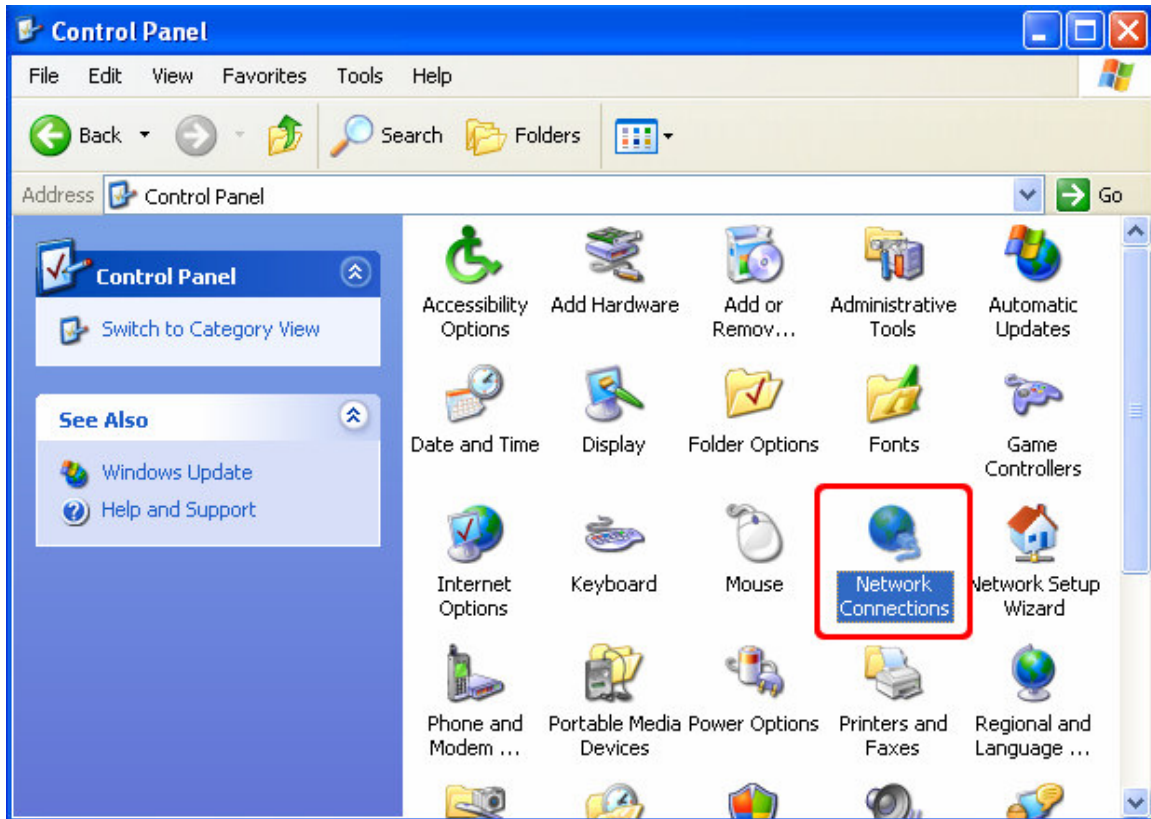
*How do I know I installed the 1.01 Patch for Hellfire?*

When you start Hellfire, it will display the version number in the lower left corner.

*How do I know I applied the Multiplayer Hack?*

The Hellfire main menu will display the choice, "Multi Player"

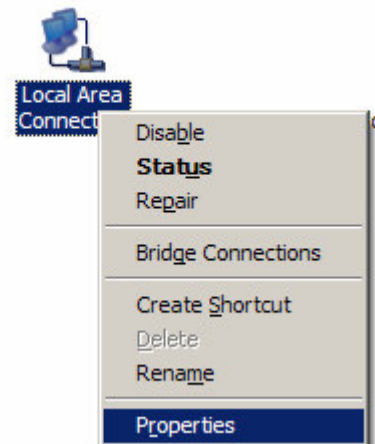
1. In your **Control Panel**, open the **Network Connections**.



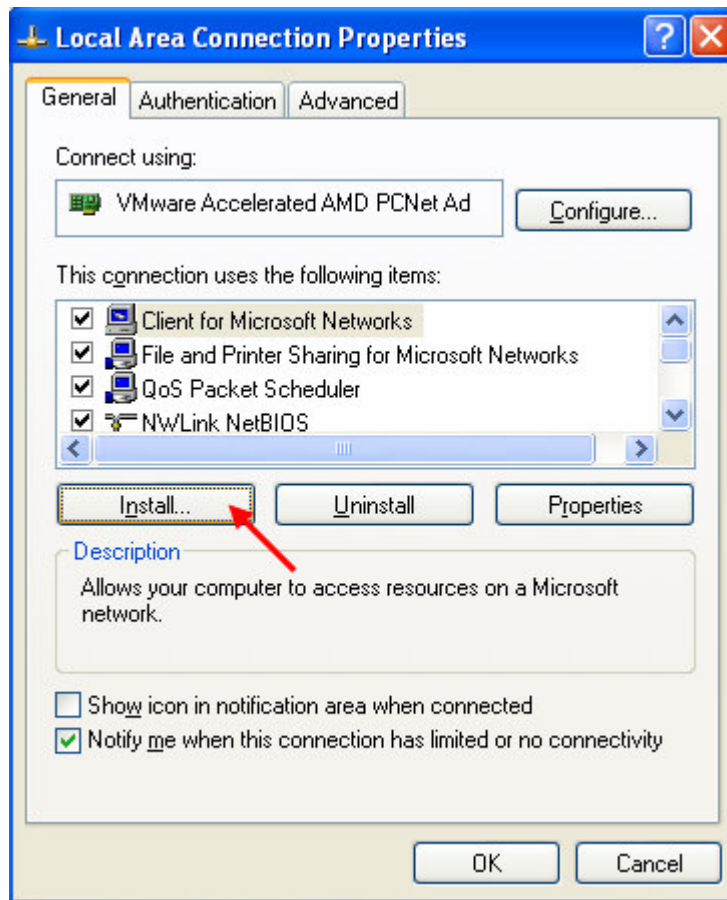
2. Select the **LAN Connection**, and right-click to choose **Properties**.

Tip: If you have multiple **LAN Connections**, choose the connection that you will use to connect to other players. If playing over **Hamachi**, you will need to select the **Hamachi** adapter.

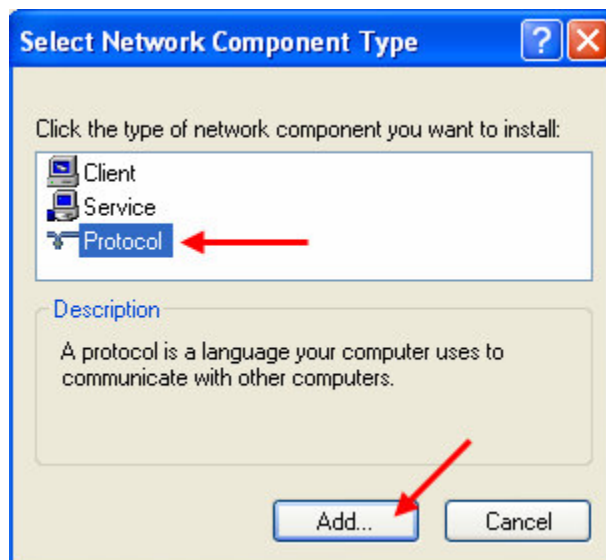
#### LAN or High-Speed Internet



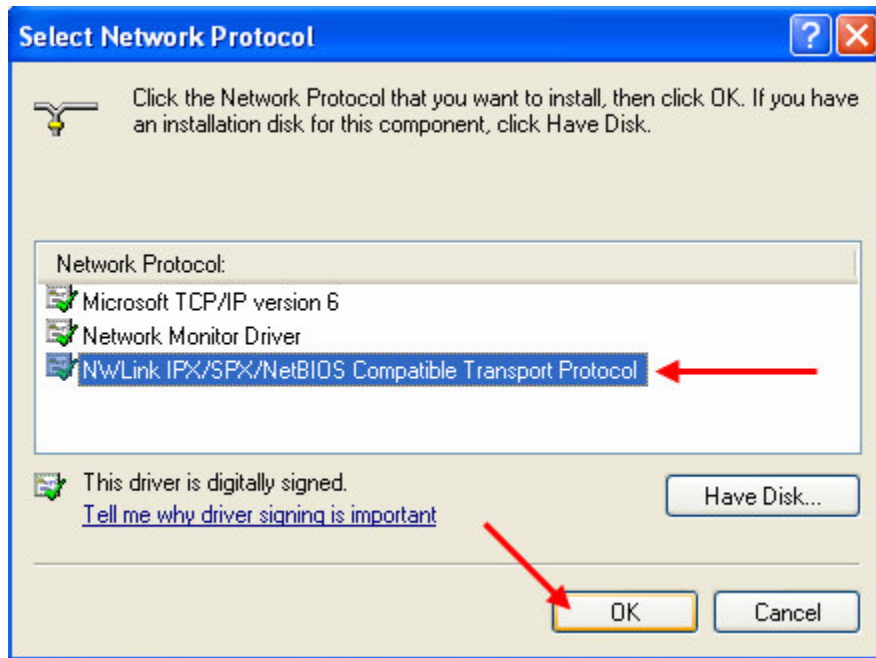
3. Click the **Install...** button.



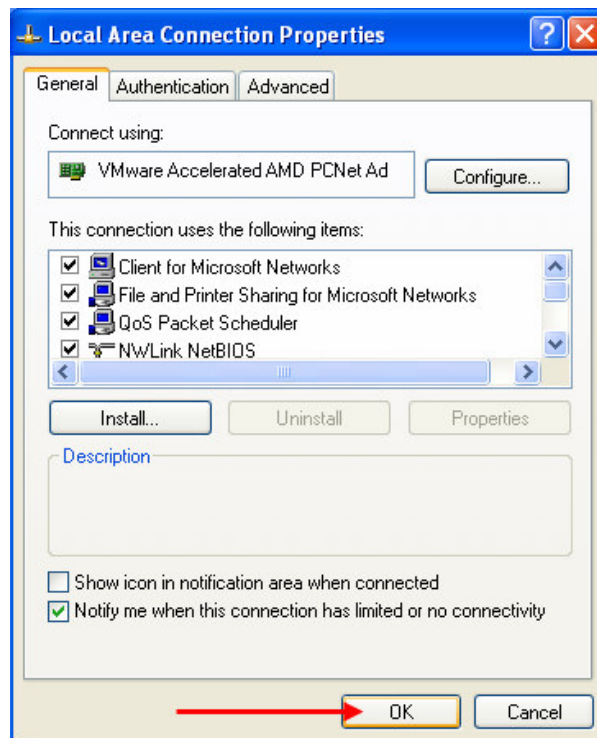
4. Select **Protocol**, and click the **Add...** button.



5. Select “NWLink IPX/SPX/NetBIOS Compatible Transport Protocol”, click **OK**.

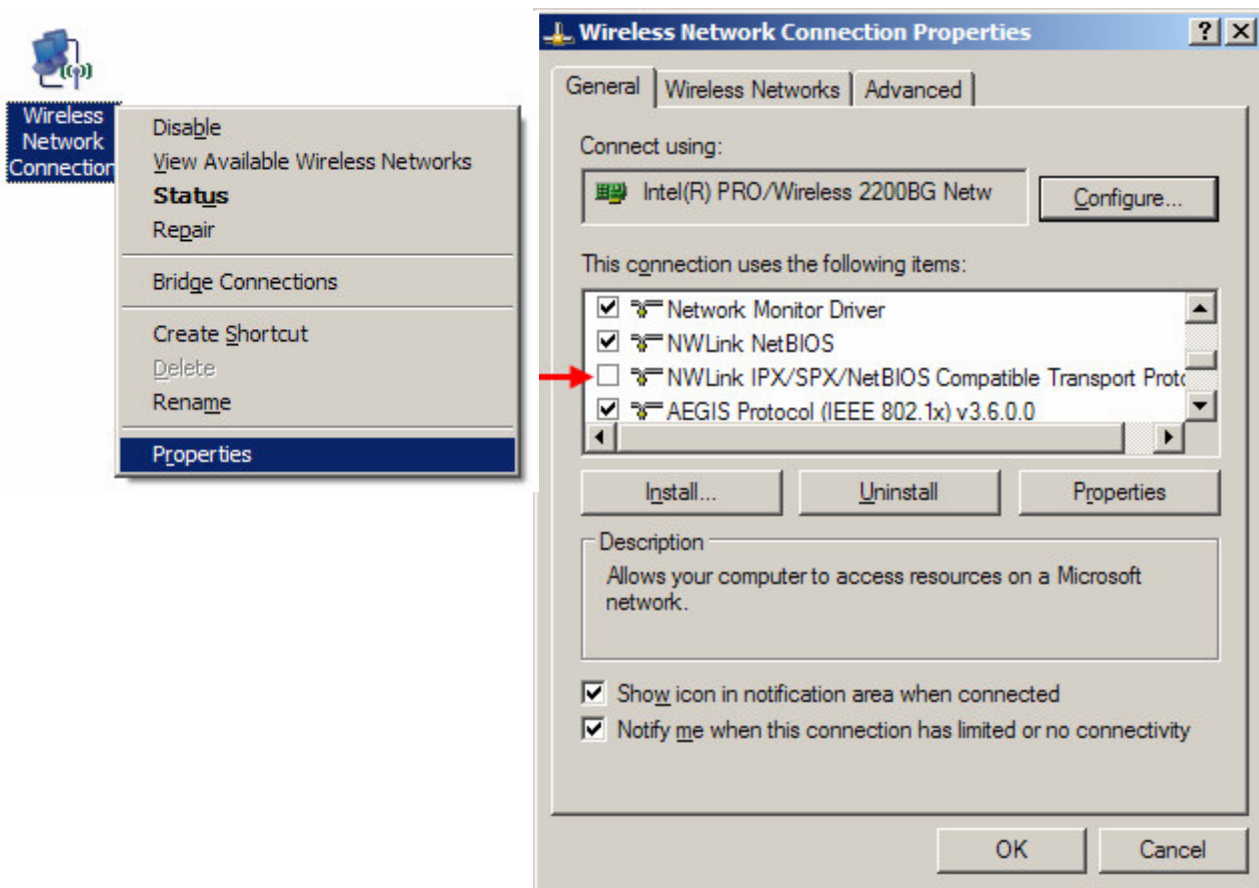


6. You will be returned to the main **Properties** page for the **LAN Connection**. Click **OK** at the bottom; this will save all of the settings. (See Note 1)



7. If your system has more than one Network Adapter (including VPN and dialup), it is necessary to disable IPX for **all** connections **except** the connection that you will use to play Diablo Hellfire with. (See Note 2)

For each adapter that will **not** be used, select Properties. Find the IPX protocol and un-check the box on the left side. Push the OK button.



8. Your system is now ready to play Diablo or Hellfire using the IPX protocol. If you want to play using a different LAN adapter, you must ensure the IPX is only enabled on that specific LAN adapter. (See Note 3)

**Note 1:** The default IPX settings have been tested and work properly. The default settings are:

Internal Network Number: 00000000

Frame type: "Auto Detect".

**Note 2:** The reason that this guide instructs the user to disable IPX for all network adapters except the one intended to be used is because the Diablo Hellfire program does not give the player the option to choose which network adapter to use. Diablo Hellfire simply selects the first one on the list of adapters that support the IPX protocol.

As you might guess, as long as the Hamachi Adapter is the first one on the list, then Diablo Hellfire will automatically choose that adapter. This has been tested. Advanced users can simply re-order the IPX adapters, rather than disabling all but Hamachi.

The list of adapters can be viewed by opening a command prompt and typing, "ipxroute config". The beginning of the list is the highest priority adapter. Note that the adapters "IpxLoopbackAdapter" and "NDISWANIPX" are not real adapters; the author does not know what they are.

```
C:\WINDOWS\SYSTEM32>ipxroute config

NWLink IPX Routing and Source Routing Control Program v2.00

Num  Name                               Network  Node                               Frame
=====
1.   IpxLoopbackAdapter                 00000001 0000000000002 [802.2]
2.   Hamachi                             00000000 7a790507f441 [802.2]
3.   Local Area Connection               00000000 0011437154a1 [802.2]
4.   NDISWANIPX                          00000000 c07e20524153 [EthII] -
```

**This sample is the Author's ipxroute config output**

The only way the Author knows how to change the order is to perform Step 7 (uncheck IPX protocol), hit OK, then check IPX again. The adapter will be moved to the bottom of the list.

**Note 3:** For convenience, all players should use Hamachi whenever they play Diablo Hellfire; even if they are on the same LAN. You will never need to tweak the network settings if you adopt this method.

**Recommendations:**

-Ensure that the same version of Hamachi is used for all players.

## **Test Setup**

All systems listed below have been able to successfully join and host games via IPX and Hamachi. Note that these tests were conducted using separate LANs, through separate ISPs for accurate real world simulation.

### **System 1**

Dell Inspiron 6000  
Windows XP Pro, Service Pack 2  
All Windows Updates Installed  
Windows Firewall ON, no exceptions allowed  
Wireless Ethernet connection  
IPX enabled for all adapters, Hamachi top priority  
Hamachi 1.0.1.5

### **System 2**

VMware Virtual PC  
Windows XP Pro, Service Pack 2  
All Windows Updates Installed  
Windows Firewall OFF  
VMWare Ethernet connection  
IPX enabled only for Hamachi adapter  
Hamachi 1.0.1.5

### **System 3**

Desktop PC  
Windows 2000 Pro, Service Pack 4  
All Windows Updates Installed  
Wired Ethernet connection  
IPX enabled only for Hamachi adapter  
Hamachi 1.0.1.5

### **System 4**

Dell Inspiron 600m  
Windows XP Pro, Service Pack 2  
All Windows Updates Installed  
Windows Firewall OFF  
Wireless Ethernet connection  
IPX enabled only for Hamachi adapter  
Hamachi 1.0.1.5



## **Updates to this Document**

1.0

Initial Release